

## Brose improves comfort, safety and efficiency of today's and tomorrow's vehicles



"Competence for Tomorrow's Mobility" is Brose's theme for Auto Shanghai 2017.

**Shanghai (20. April 2017)** "Competence for Tomorrow's Mobility" is Brose's theme for the Auto Shanghai 2017. The technological leader in mechatronics for doors, seats and electric drives is showcasing developments and ideas that make driving safer, more comfortable and efficient in the future. A side door drive enables easier vehicle access and can also be controlled via a smartphone. With its fully electrified seat platform, the company is underscoring its vision of flexibly adaptable interiors. And the supplier is taking a step towards system expertise in drive train actuators with its electric oil pump.

Regarding comfortable vehicle access Brose sets new standards: With its drive for side doors, the company is presenting a new modular solution for comfortable vehicle access. The innovation moves hinged doors electrically and offers optional control via mobile end devices. A capacitive anti-trap protection feature ensures the necessary level of safety when the door is being shut.

Additionally, the mechatronics specialist is demonstrating its expertise in lightweight design through further development of its door system using fiber-reinforced thermoplastics (organo sheets). The material saves up to 2 kilograms in the vehicle compared to conventional plastics, but it can absorb four times as much of energy. The reduction in weight is even 5 kilograms when compared to conventional steel doors.

### **Maximum flexibility in the vehicle interior:**

#### **Brose innovative seat platform**

Using an innovative platform, the supplier is presenting the complete electrification of all seat rows. Based on this system approach, the company makes it possible for passengers to have a highly functional and flexible car interior: all seat adjustments can be fully remote controlled via a smartphone app. The driver can configure the interior at the touch of a button, adapting it to everyday situations – whether many seats are required, or more space to transport luggage. Depending on personal requirements, the settings can be saved and recalled. An innovative rail concept for the seat length adjustment ensures that

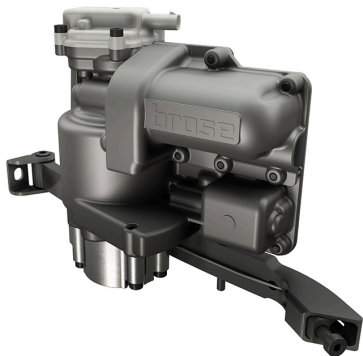
vehicle interiors conjure up a sophisticated and ordered ambience. Additionally, there is considerably more legroom for rear passengers.

**More comfort and efficiency in driving:**

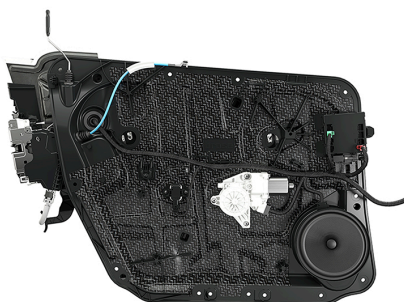
**System expertise in drive train actuators**

The electric oil pump represents another step in the company's development in the area of drive train actuators. The product comprises an electronically commutated motor, the control electronics and an integrated pump. The highly integrated components ensure improvements in efficiency, acoustics and weight in the system.

The electric oil pump enables the start-stop function as well as coasting, since it maintains pressure in the transmission when the engine turns off. It is possible to reduce emissions by up to 10 grams of CO<sub>2</sub> per kilometer without placing constraints on driving dynamics. Restarting for example is faster. The mechatronics specialist has already been awarded several contracts from different OEMs and global series production will start next year.



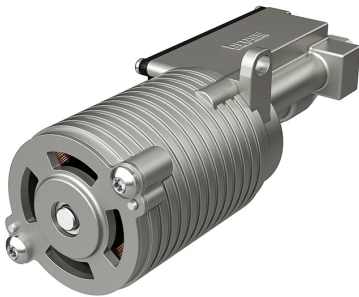
With its drive for side doors, the company is presenting a new modular solution for comfortable vehicle access.



Brose light-weight design door system can reduce up to 5 kilograms compared to conventional steel doors.



Brose innovative platform can realize complete electrification of all seat rows.



Brose electric oil pump represents another step in the area of drive train actuators.

### **About Brose Group**

Brose is the world's fifth-largest family-owned automotive supplier. The company develops and produces mechatronic systems for vehicle doors and seats as well as electric motors, drives and electronics, among others for steering, brakes, transmissions and engine cooling. Nearly 25,000 employees at 61 locations in 23 countries generate turnover of 6.1 billion euros (44 billion rmb). Every second new vehicle worldwide is equipped with at least one Brose product.

### **About Brose China**

Brose started its activities in the Chinese market in 1996 and has been growing ever since. Today, the mechatronic specialist is presented with 12 sites in six of China's most important automotive regions Shanghai, Beijing, Changchun, Chongqing, Wuhan and Guangzhou and has localized its entire product portfolio as well as its research and development competence in the country. The company employs around 3,900 people in China and generated a turnover of approximately 1.2 billion euros (8.7 billion rmb) in 2016.